

YANTIAN INVESTMENT GUIDE

盐田投资指南

深圳市盐田区工业和信息化局（商务局）

YANTIAN DISTRICT INDUSTRY AND INFORMATION TECHNOLOGY BUREAU, SHENZHEN (COMMERCE BUREAU)

地址：深圳市盐田区深盐路2088号区行政中心

Address: No.2088, District Administrative Center, Shenyuan Road, Yantian District, Shenzhen

深圳市盐田区投资推广服务中心

YANTIAN DISTRICT INVESTMENT PROMOTION SERVICE CENTER, SHENZHEN

电话：0755- 25359326 传真：0755-25355593

Tel: 0755- 25359326 Fax: 0755-25355593

盐田区政府在线：http://www.yantian.gov.cn/

Yantian district government 's website: http://www.yantian.gov.cn/





寄语 PREFACE

盐田区将深入学习贯彻习近平总书记关于广东、深圳工作的重要讲话和指示批示精神，不忘初心、牢记使命，勇于担当、奋发有为。积极抢抓粤港澳大湾区和中国特色社会主义先行示范区“双区驱动”重大历史机遇，大力实施“产业兴盐”战略，加快建设宜居宜业宜游的现代化国际化创新型滨海城区。

欢迎大家一同感受盐田魅力，在盐田找到发展商机，共创美好未来！

Yantian will deeply learn and carry out the spirits of General Secretary Xi Jinping's important speech and instructions to Guangdong Province and Shenzhen City, remain true to our original aspiration and keep our mission firmly in mind, take up the responsibility bravely, strive to make achievements, seize on the major historical opportunities arising from the construction of Guangdong-Hong Kong-Macao Greater Bay Area and a socialist forerunning demonstration zone with the special characteristics of China, and accelerate the completion of a modernized, internationalized and advanced coastal urban area suitable for living, business and tourism.

We sincerely invite you to feel the charm of Yantian. Let's enjoy business opportunities and write a bright future together!

山海交融
人与自然和谐发展

CATALOG



城区环境
URBAN ENVIRONMENT



主导产业及重点开发区域
LEADING INDUSTRY
AND KEY DEVELOPMENT AREAS



优质载体
OUTSTANDING INDUSTRY CARRIER



配套政策
BUSINESS ENVIRONMENT
AND SUPPORTING POLICIES

城区环境

URBAN ENVIRONMENT

生态环境

Ecological Environment

社会民生

People's Livelihood

交通环境

Traffic Environment



概况 OVERVIEW

盐田区成立于1998年，位于深圳东部，海域、陆域与香港相连，背依珠江三角洲，既是深圳东部发展支点，也是深圳联结广东东翼的枢纽。辖区总面积74.99平方公里，常住人口约30万人，是深圳市人口最少的行政区。盐田因港口而立，因山海而兴，因人文而盛，具有“小而精、秀而美”的特色和神韵。

盐田区风光隽美，旅游资源得天独厚。海岸蜿蜒曲折，与香港特别行政区山水相连，沙滩、岛屿错落，海积海蚀崖礁散布其间，海岸线长30.2公里，是华南乃至全国风光最优美的“黄金海岸”之一。

“一街两制”、“梧桐烟云”和“梅沙踏浪”位居“深圳八景”。这里山海交融，人与自然和谐发展。深圳第一高峰梧桐山主峰、梧桐山国家森林公园、22平方公里的三洲田郊野公园，使盐田背靠青山、怀拥大海。

Founded in 1998, Yantian District is located in the east of Shenzhen. Its territory of sea and land is adjacent to Hong Kong and is back to the Pearl River Delta. It is not only the fulcrum for the development of east Shenzhen, but also the hub connecting Shenzhen and the east Guangdong. It administrates 74.99 km² with permanent residence of 300,000. It is the least populated administrative district in Shenzhen. Yantian district is founded for its port advantage, thrives for its coastal and mountainous landscapes and flourishes for its cultural factors. It is famous for its elegant refinement and charming beauty.

The exquisite scenery grants unique tourism resource to Yantian District. It is connected with the Hong Kong Special Administrative Region by sea and mountain. There are numerous beaches, islands, cliffs and reefs scattering over the zigzag seashores. Its coastline extends 30.2 km and is one of the most beautiful Gold Coast in South China and even nationwide.

One Street and Two Systems, Cloud and Mist of the Wutong Mountain as well as Walking in the Weaves of the Meisha Beach are among the Eight Must-See Landscapes of Shenzhen. In Yantian District, mountains blend with sea and people live in harmony with nature. The summit of the Wutong Mountain, which is the highest peak in Shenzhen, together with the Wutong National Forest Park and the Sanzhoutian Country Park with area up to 22 km² enable the Yantian District to be back against the green hills while embrace the sea.

ECOLOGICAL ENVIRONMENT

生态环境

2019年全年环境空气优良天数345天，优良率为94.5%，继续保持全市第一。PM2.5年均浓度为19微克/立方米，达欧盟标准，是深圳市史上首次区级年均值低于20微克/立方米。荣获首批国家生态文明建设示范区称号，成为全省唯一入选的区县级行政区，省级宜居社区实现全覆盖。蝉联市生态文明建设考核“八连冠”、治污保洁工程考核“八连冠”、污染减排考核“五连冠”。

是华南地区首个“国家生态区”。全区森林覆盖率超过65%，继续保持饮用水源、地表水、近岸海域水质100%达标。

In 2019, Yantian District has 345 days of good air quality, with the excellence rate of 94.5%, again ranking the first place in the city. With annual PM 2.5 concentrations of 19 micrograms per cubic meter, its air quality is in par with the EU standards, marking the first time when the annual PM 2.5 concentrations of a district stands below 20 micrograms per cubic meter. The District has honorably obtained the title of National First Ecological Civilization Construction Demonstration Zones, become the only district- and county-level administrative region elected for this honor in this province, while all communities are provincial-level livable communities. It has realized “Eight Consecutive Championships” in the assessment of ecological civilization construction, “Eight Consecutive Championships” in the assessment of pollution control and maintenance project, and “Five Consecutive Championships” in the assessment of pollutant discharge reduction.

Yantian District is the first National Eco-region in South China with a forest coverage rate of 65%. Its water quality of drinking water sources, surface water, and off-shore sea areas keeps being completely up-to-standard.



盐田区创建运行国内首个生态文明碳币服务平台。“城市GEP核算体系研究及应用”项目荣获第八届“中国政府创新最佳实践奖”。2019年城市GEP（城市生态系统生产总值）持续增长，连续六年实现城市GEP与GDP双核算、双运行。

Yantian District initiates the operation of the first ecological carbon service platform in China. The project “Research and Application of the Urban GEP Accounting System” is granted as the 8th Session National Award for Governmental Innovation Best Practice. In 2019, the urban GEP witnessed continued growth, maintaining the accounting and growth together with GDP for six years successively.

全部学校建成绿色学校，全部社区被评为绿色社区，所有星级酒店均为绿色酒店。形成了健全的绿色交通体系，19.5公里的海滨栈道、总长达257公里的绿道和登山道、覆盖全区的自行车慢行系统交织蜿蜒，宛如一首动人的乐曲。

All schools in Yantian District are built as Green Schools, all communities are rated Green Communities and all star hotels are Green Hotels. The seashore boardwalk of 19.5 km, the greenways of 257 km, mountain trails and the bicycle slow line system interweave with each other. They jointly form a sound green transportation system as beautiful as a melody touching your heart.

PEOPLE'S LIVELIHOOD

社会民生



现有中小学16所、幼儿园28所，是全省“教育强区”、“全国义务教育发展基本均衡区”。公办中小学校在全市率先实现外籍教师、科技副校长、未来教室三个全覆盖。现有医院2家，妇幼保健院1家，社康中心13家，形成了完善的医疗服务体系。

区社会福利中心颐养院成为全国养老服务机构标准化试点单位。区图书馆、档案馆、游泳馆、文体康乐中心开放运营，四级公共图书馆服务网络投入使用，“十分钟公共图书馆服务圈”全面形成。城镇居民登记失业率2.2%。

There are 16 primary and middle schools, 28 kindergartens in Yantian District. It is listed as the “Best District with Abundant Education Resource” in Guangdong and the “District Advanced in Balanced Development of Compulsory Education in China.” State-run primary and middle schools have taken the lead in introducing foreign teachers, vice presidents focusing on technology, and future classrooms in the city. Besides, Yantian District is equipped with well-established health service system, including two hospitals, one maternal and child care service center, 13 community health service centers (CHSC).

The nursing home of the social welfare center in Yantian District is selected as the experimental unit for the national standardized elderly care services. The newly-built libraries, archives, natatoriums as well as the culture and sports centers have been put into operation. The 4-level public library network has been put into use, which enables the residents in the district to access the public libraries within 10-minute walk. Besides, the urban registered unemployment rate of Yantian District is as low as 2.2%.



盐田社会和谐，是社会治安“首善之区”，公共安全指数和群众安全感稳居全市前列。在全国率先制定社会工作服务分领域标准，被国家民政部确定为全国社会工作服务示范地区，成为全国首个社会工作标准化服务试验区。平安建设品牌享誉全国，荣获全国平安建设先进区称号，成为全省5个获此殊荣的行政区县之一。

With harmonious society, Yantian is granted as the “Most Philanthropic and Benevolent Community” for good public order. The District takes a lead in the city and even the province for the public's sense of security and the people's satisfaction with the public security work. It takes the first step in formulating the social service standard by category in China. It is identified as the National Demonstration Area for Social Service and become the first national pilot district for standardized social service. The District is famous nationwide for its security construction brand. It has been titled as “National Advanced District for Security Construction,” and become one of the five administrative districts and counties obtaining this special honor in the province.



TRAFFIC ENVIRONMENT

交通环境

盐田陆路、海域与香港相连，陆路沙头角口岸通关快捷，只需30分钟便可抵达香港九龙塘交通枢纽。

轨道8号线、轨道18号线将陆续建成通车，坪盐通道、盐排高速、盐龙大道、深盐二通道等形成立体路网。快捷口岸通关优势和现代化的交通网络，让盐田经海路、陆路与世界快速联通。



The land and sea territory of Yantian District connect to Hong Kong. It takes a short time to get to Hong Kong through the Shatoujiao Port and only takes 30 minutes to reach the Kowloon Tong transportation hub in Hong Kong.

Metro line 8 and line 18 will be put into use. Pingshan-Yantian Channel, Yantian-Paibang Highway, Yantian-Longgang Avenue, No.2 Shenzhen-Yantian Channel among others are to form a three-dimensional network. Given the advantages of a convenient port and the modern network of roads, Yantian is connected to the world by sea and land.

主导产业及 重点开发区域

LEADING INDUSTRY AND KEY DEVELOPMENT AREAS

港口物流
Port Logistics

黄金珠宝
Gold&Jewelry

全域旅游
Region-based Tourism

生命健康与人工智能
Life and Health Industry and Artificial Intelligence

盐田河临港产业带
Yantian River Port-Vincity Industry Belt

沙头角深港国际旅游消费合作区
Sha Tau Kok Shenzhen-HK international tourism
& consumption cooperation area

盐田综合保税区
Yantian Integrated Free Trade Zone

盐田综合保税区沙头角片区
Sha Tau Kok bonded zone of Yantian Integrated Free Trade Zone

创智核心区
The Innovative Intelligence Core Area Zone

小梅沙片区整体改造项目
Xiaomeisha Area Overall Renovation Project

概况 OVERVIEW

2019年，初步核算全区生产总值656.48亿元，同比增长8.2%。

盐田区坚定不移实施“产业兴盐”战略，着力推进以科技创新为核心的全面创新，加快构建以高端航运服务、生命健康、人工智能、科技金融为重点和总部经济为主体的现代产业体系，走出一条强产业、优经济、兴城区的高质量发展道路。

In 2019, the preliminary estimate showed that the GDP of Yantian District reached 65.648 billion yuan, increased by 8.2 % compared with that in 2018.

Committed to the strategy of industry-driven development, Yantian District strives to advance the all-round innovation with the scientific and technological innovation at the core, endeavors to expedite the building of a modern industrial system that focuses on high-level navigation services, life and health, artificial intelligence, technology and finance with the headquarters economy as the principal part, thus embarking on the high-quality development path that features strong industries, an advanced economy and a prosperous district.

PORT LOGISTICS

港口物流

盐田拥有世界级天然深水良港盐田港。盐田国际集装箱码头荣获“亚洲最佳集装箱码头”和“亚洲最佳绿色集装箱码头”，现有深水泊位20个，每周86条航线抵达世界各主要港口，全球超过80%的大型船舶和超大型船舶均靠泊盐田国际，18000标箱以上超大型集装箱船87%靠泊。2019年吞吐量达1306.9万标箱。盐田区现有临港仓储面积共约204万平方米。华南地区远洋主枢纽港口的地位巩固。



Yantian District owns Yantian Port as the world-class deep water port. The Yantian International Container Terminals is awarded the “Best Container Terminal Asia” and “Best Green Container Terminal,” owns 20 deep water berths and operates 86 lines to major ports worldwide per week. As a result, over 80% large ships and ultra-large ships moor at Yantian, while 87% ultra-large containerships carrying over 18,000 TEU dock there. The container throughput of the Yantian Port reached 13,069,000 TEU in 2019. Yantian District has a gross port-vicinity storage area of 2.04 million m². All of these consolidate its position as the main hub port in South China.

GOLD&JEWELRY

黄金珠宝



盐田是全国黄金珠宝加工业发展的发源地，现拥有黄金珠宝企业700余家，其中规模以上企业42家，盐田有国内黄金珠宝“三巨头”，周大福是中国零售额最高的黄金珠宝企业，百泰是中国最大的黄金生产加工企业，粤豪是中国领先的黄金批发企业。

Yantian is the cradle of the national gold & jewelry processing industry. Now, there are more than 700 gold & jewelry enterprises, of which 42 are large-scale enterprises. The District boasts a troika of gold & jewelry enterprises in China. Specifically, Chow Tai Fook is the gold & jewelry enterprise having the highest retail sales in China. Bata is the largest gold production and processing enterprise in China. YueHao Jewelry is the domestic leading gold wholesale enterprise.



黄金珠宝产业转型升级三年行动计划全面完成，黄金珠宝总部企业走廊已经形成。盐田黄金珠宝产业不断向创意设计、高端制造环节延伸。

Yantian District has completed the Three-Year Plan for Upgrade and Transformation of Gold and Jewelry Industry. The Headquarter Corridor for Gold and Jewelry Enterprises has taken shape. The gold and jewelry industry in Yantian has been extended to creative design and high-end manufacturing.

REGION-BASED TOURISM

全域旅游



盐田山海旅游资源丰富，滨海旅游业发达，拥有国家级风景名胜区梧桐山国家森林公园、占地近9平方公里的东部华侨城、大梅沙海滨公园、小梅沙度假村、中英街、小梅沙海洋世界、金色海岸观光游艇、大梅沙湾游艇会、大梅沙奥特莱斯购物村等一批旅游购物胜地。

Yantian District is abundant with mountain and sea resources, featuring advanced coastal tourism. The nation-re-nowned scenic spot Wutong Mountain National Forest Park locates itself there. Besides, there are several reputable landscapes, like the 9 km² OCT East, Dameisha Coastal Park, Xiaomeisha Resort, Chung Ying Street, Xiaomeisha Sea World, Golden Coast Cruising Yacht, Dameisha Yacht Club as well as Dameisha Outlets.



拥有盐田凯悦酒店、大梅沙京基洲际度假酒店、东部华侨城茵特拉根酒店群、凯贝丽酒店、雅兰酒店、大梅沙海景酒店、芭堤雅酒店等一批高品质旅游度假酒店。

盐田区围绕加快建成宜居宜业宜游的现代化国际化创新型滨海城区以及沙头角深港国际旅游消费合作区建设的契机，以“全域+全季”旅游发展理念，大力实施“旅游+”和“+旅游”战略，出台《盐田区全域旅游产业发展扶持办法》。2019年全年游客人数达1832万人次，旅游业总收入突破100亿元。成功入选首批广东省全域旅游示范区。

There are a number of quality accommodation facilities such as Hyatt Regency Shenzhen Yantian, InterContinental Shenzhen Dameisha Resort, Interlaken OCT Hotels, Capri by Fraser Shenzhen, Airland Hotel, La Waterfront Hotel and Pattaya Hotel Shenzhen among others.

Seizing the opportunity to build a “livable, industrial, tourist-friendly, innovative, modern, and international coastal area” and Sha Tau Kok Shenzhen-HK international tourism & consumption cooperation area, Yantian adopts the “full domain + full season” tourism development plan, implements the “tourism+” and “+tourism” strategies, rolls out “The Guidelines on Supporting the Industrial Development of All-For-One Tourism in Yantian.” In 2019, the total number of visits from tourists reached 18.32 million, generating revenue of over 10 billion yuan. Yantian has thereby secured a place among the first batch of tourism demonstration zones in Guangdong, a demonstration area for region-based tourism.

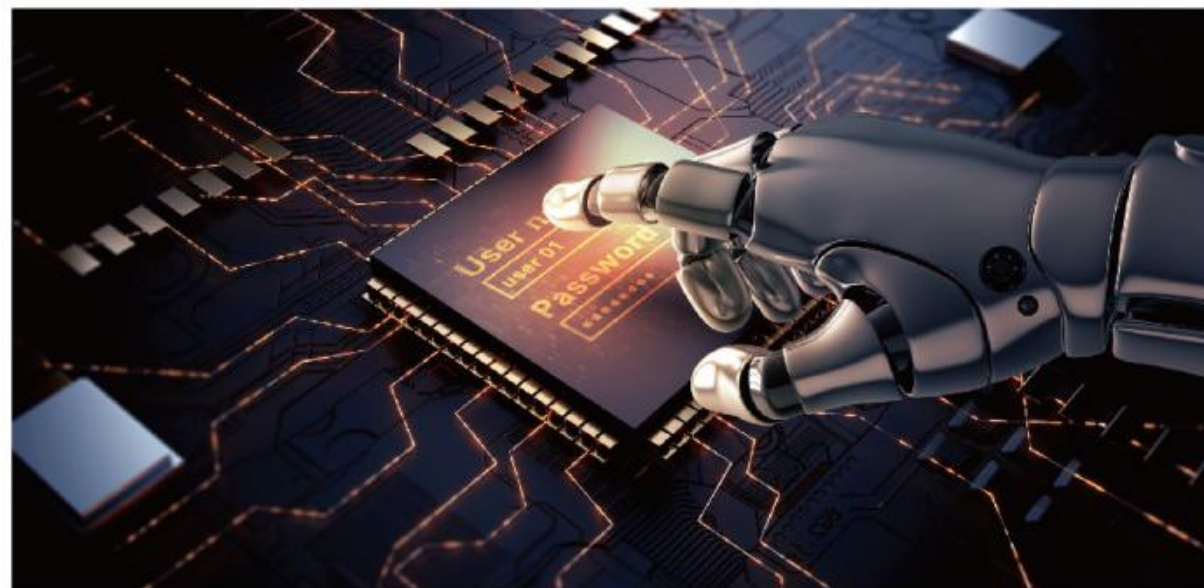
LIFE AND HEALTH INDUSTRY AND ARTIFICIAL INTELLIGENCE

生命健康 与人工智能

生命健康 LIFE AND HEALTH

出台《盐田区生命健康产业扶持措施》，依托华大基因等骨干企业核心竞争优势，探索构建开放共享的生命健康产业公共技术与服务平台，吸引生命健康领域重大科研平台、重点实验室以及相关产品与服务的示范试点落户。依托大百汇生命健康产业园和深圳健康智谷，正集聚更多上下游企业落户发展。逐渐形成规模大、专业化程度高、配套成熟的生命健康产业生态圈。

Adopting “Measures to Support Life and Health Industry in Yantian District” and relying on the core competitiveness of the backbone enterprises such as BGI, the District has explored for the construction of an open and shared public technical and service platform for the life and health industry, and strived for the settlement of major scientific research platforms, key laboratories, and pilot demonstration of relevant products and services in the field of life and health. Given the DBH Life Sciences & Health Industrial Park, and “Shenzhen Health Work”, the District are witnessing the settlement and growth of an increasing number of upstream and downstream enterprises, thus forming the ecosystem of life and health industry that features large scale, professional characteristics and comprehensive supporting facilities.



人工智能 ARTIFICIAL INTELLIGENCE

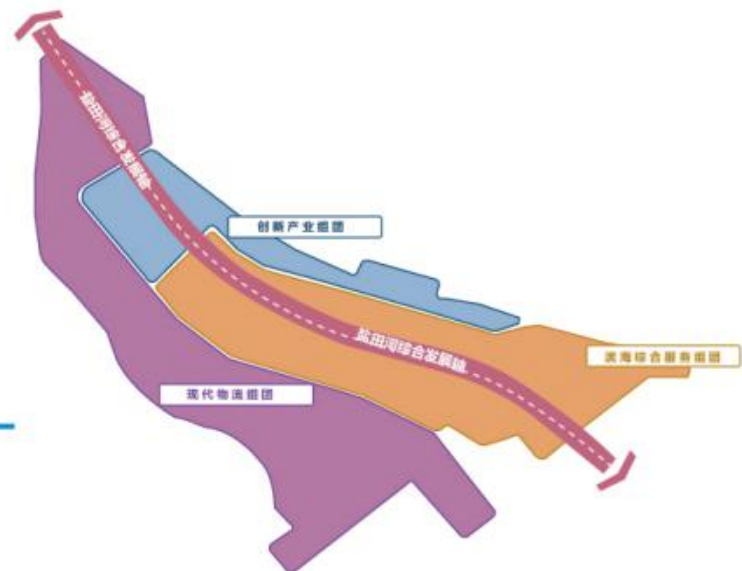
Artificial Intelligence industry is one of the key industries in Yantian District. A group of high-quality enterprises are in clusters such as Malong Technologies and VisionNav Robotics among others, whose products and technologies are utilized in image recognition, autonomous driving, logistics robot and other fields. The District will rely on high-quality industries, improve the support policy system for scientific and technological innovation, deepen Shenzhen-Hong Kong cooperation, strengthen the introduction and cultivation of high-tech enterprises, promote the building of science and technology business incubators, mass innovation space and scientific research and innovation platform, and promote the high-quality industrial development.

人工智能产业是盐田区重点发展的产业之一。码隆科技、未来机器人等一批优质企业集聚发展，产品和技术应用于图像识别、无人驾驶、物流机器人等领域。盐田区将依托优质产业载体，完善科技创新扶持政策体系，深化深港合作，加强引进和培育高新技术企业，推进科技企业孵化器、众创空间和科研创新平台建设，推动产业高质量发展。



YANTIAN RIVER PORT-VINCITY INDUSTRY BELT

盐田河临港 产业带



盐田河临港产业带是深圳市重点开发建设区域之一，是深圳联通粤东实施“东进战略”的桥头堡。盐田河临港产业带规划面积768万平方米，以“现代物流业”和“创新型产业”为基础，以“配套服务业”为支撑，具有竞争力的“2+1”临港产业体系，区域整体营商环境优良，政策环境一流、产业配套齐全、创新氛围浓厚、人才引导机制完善。将汇聚多方优势，融合各产业发展，改变区域生活环境，发展成为一个产业领先、开放创新、绿色低碳、港城协调的临港产业生态城。



Yantian River Port-Vicinity Industry Belt is one of the key development and construction areas in Shenzhen, and is a bridgehead for Shenzhen to carry out "Eastward Advance Strategy" connecting the eastern part of Guangdong Province. Yantian River Port-Vicinity Industry Belt, covering a planned area of 7.68 million m², based on "modern logistics" and "innovative industry," and supported by "supporting service industry", has the competitive "2+1" port-vicinity industry system, and enjoys overall good business environment, top-ranking policy environment, complete industrial supporting facilities, dense atmosphere of innovation, and perfect talent guiding mechanism on the whole. It will gather lots of advantages, integrate the development of various industries, change the regional living environment, and develop into an industrial leading, open and innovative, green and low-carbon, port-city coordinated port-vicinity industrial ecological city.



SHA TAU KOK SHENZHEN-HK INTERNATIONAL TOURISM & CONSUMPTION COOPERATION AREA

沙头角深港国际旅游消费合作区

沙头角深港国际旅游消费合作区，占地面积约50.9万平方米，将打造集跨境旅游合作区、国际商贸消费先行地、深港先行先试承载平台、大湾区深度合作示范区于一体的宜居宜业宜游区域。

Covering an area of 509,000 m², Sha Tau Kok Shenzhen-HK international tourism & consumption cooperation area strives to be a livable, industrial, tourist area integrating a cross-border tourism cooperation area, a world-leading district of international commerce and consumption, a platform of pilot projects in Shenzhen-Hong Kong, and Deep Cooperation Demonstration Area of the Greater Bay Area.

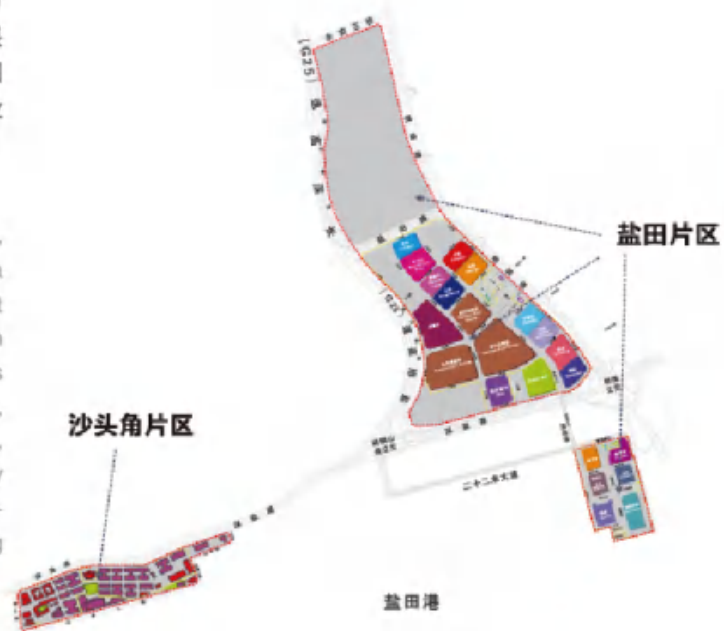




YANTIAN INTEGRATED FREE TRADE ZONE 盐田综合保税区

盐田综合保税区，占地面积173万平方米，是国家级综合保税区。将打造灵活开展保税仓储和展示，国际贸易、国际分拨、国际中转集拼、跨境电子商务、检测维修等业务的海关特殊监管区域。联系电话：0755-25260333。

Covering an area of 1.73 million m², Yantian Integrated Free Trade Zone is a nation-level comprehensive bonded area. It will develop special customs supervision areas that can flexibly operate businesses like bonded warehousing and exhibition, international trading, international trading, international distribution, Multi-country Consolidation(MCC), cross-border e-commerce and testing and repairing among others. Contact Number: 0755-25260333.



SHA TAU KOK BONDED ZONE OF YANTIAN INTEGRATED FREE TRADE ZONE

盐田综合保税区沙头角片区

盐田综合保税区沙头角片区，占地27.3万平方米。将围绕人工智能、生命健康、智慧物流等产业，打造盐田的中央创新区、场景生态驱动核。

Covering an area of 273,000 m², Sha Tau Kok bonded zone of Yantian Integrated Free Trade Zone will revolve around AI, life and health, and intelligent logistics among other industries to build itself into the Central Innovation Zone and Ecological Driver Core in Yantian.



THE INNOVATIVE INTELLIGENCE CORE AREA ZONE

创智核心区

创智核心区，占地约51.5万平方米，重点依托人工智能、智能设备和生命健康产业，打造为“创新研发+协同制造+应用服务+商务贸易”四位一体的智造临港城。

Covering an area of 515,000 m², the Innovative Intelligence Core Area relies on AI, intelligent device and life and health industry, building itself into a creative costal town integrating “Innovative R&D+ Collaborative Production + Application Service +Trade and Commerce.”



XIAOMEISHA AREA OVERALL RENOVATION PROJECT 小梅沙片区整体改造项目

小梅沙片区整体改造项目，由特发集团拟投资150亿元改造，项目总体统筹规划面积387万平方米，其中陆域面积253万平方米，海域面积134万平方米。项目主要分为北区、南区和小梅沙湾：北区将规划建设郊野生态公园、户外运动基地；南区将规划建设发展休闲度假、商贸会务等业态产品及高端产业空间；小梅沙湾将集海湾生态、水上运动、滨海休闲等于一体，引入国际赛事，打造精彩多元的活力湾区。最终形成“一个山海公园，四个活力片区”，暨中央山海公园和叠翠活力山林、梦幻梅沙海湾、蓝色风情小镇、奇幻海洋世界。项目联系人：张女士 13510538499。



Xiaomeisha Area Overall Renovation Project, in which Shenzhen Special Economic Zone Development Group Co., Ltd. intends to invest 15 billion yuan, covers a total planned construction area of 3.87 million m², including a land area of 2.53 million m² and a sea area of 1.34 million m². The project is mainly composed of the North Zone, South Zone and Xiaomeisha Port: North Zone is planned to be a countryside ecological park and an outdoor sports base; South Zone will see the development of leisure vacations, trade and commerce conferences among other business products as well as the building of a high-end industrial space; Xiaomeisha Port will feature the bay ecology, water sports, coastal leisure, while hosting international sports events, with a view to building a wonderful, diverse and dynamic bay area. As a result, a mountain and sea park, and 4 dynamic areas will come into being, namely Central Mountain and Sea Park, Green and Dynamic Forest, Fantastic Meisha Bay, Blue Town, Magical SeaWorld. Contact person of the project: Ms. Zhang, 13510538499.

优质载体

OUTSTANDING
INDUSTRY CARRIER

壹海国际中心
International Center of One City

盐田科技大厦
Yantian Science and Technology Building

大百汇生命健康产业园
DBH Life Sciences & Health Industrial Park

翡翠岛广场
Jadeite Island Plaza

合景同创广场
KWG Topchain Plaza

太平洋工业区更新项目（海智云谷）
Pacific Industrial Zone Renewal Project (Haizhi Cloud Valley)

金斗岭更新项目
Jindouling Renewal Project

中兴国际研发培训中心
Introduction of ZTE international r&d training center

东部冰雪创新城
BH-ice Zone

盐田现代产业服务中心
Yantian Modern Industry Service Center

深圳精茂进口商品展示交易中心（精茂城）
Shenzhen Elite Import Commodities Exhibition and Trade Center (Elite Import City)

国家珠宝文化创意产业基地
National Creative Industry Base for Jewelry Culture

盐田国际创意港、深港国家电商广告产业园
Yantian International Creative Harbor & SZ-HK E-commerce Advertising Industry Park

金马创新产业园
Kingma Marina Square

中英街特色商业街
Chung Ying Street

海格云链大楼
Haige Cloud Chain Building

中通百富新现代物流园
Zhongtong-Baifuxin Modern Logistics Park

盐田港世纪物流园
Yantian Port Century Logistics Park

盐田国际大厦
YICT Building

INTERNATIONAL CENTER OF ONE CITY

壹海国际中心

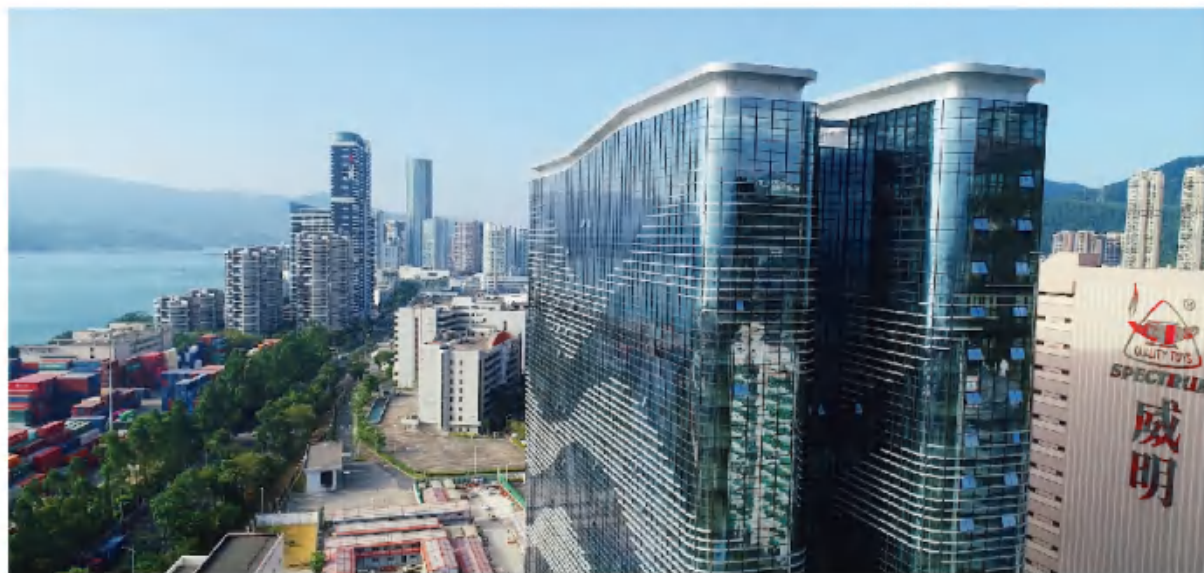
壹海国际中心位于盐田区海景二路壹海城三区（2期）A座，是由万科和招商地产联手打造的深圳首个真海城市综合体，占据盐田CBD中心地段。壹海国际中心总建筑面积约为12.48万平方米，其中7-28层用于办公，建筑面积约3.99万平方米，每层建筑面积约1900平方米，是目前盐田唯一的真山真海甲级写字楼。壹海国际中心是涵盖了海岸街区式购物中心、商务写字楼、五星级酒店为一体的地标性建筑。项目联系人:魏先生13760147536; 肖女士18672811500。

International Center of One City, located in Section A, Third Zone (Phase II) of One City, Second Haijing Road, Yantian District, is the first urban complex near the sea in Shenzhen constructed by Vanke and China Merchants Real Estate, and occupies the central land section of Yantian CBD. International Center of One City covers a total building area of around 124,800 m², and wherein, floors 7-28 are used as offices, and cover a building area of around 39,900 m², namely around 1,900 m² for each floor, presently the only top-notch office building near mountains and seas. It is a landmark building integrating coastal block shopping centers, commercial office buildings, and five-star hotels. Contact persons of the project: Mr. Wei, 13760147536; Ms. Xiao, 18672811500.



YANTIAN SCIENCE AND TECHNOLOGY BUILDING

盐田科技大厦



盐田科技大厦位于盐田综合保税区沙头角片区，靠近深圳地铁2号线东延线盐田港站，由深圳市深沙保（集团）有限公司投资兴建。盐田科技大厦总建筑面积约7.23万平方米，其中地上21层，建筑面积约5.64万平方米，地下2层，建筑面积约1.59万平方米，配备地下停车位442个、地面停车位208个。拥有甲级写字楼配套设施。盐田科技大厦是集科技研发、商务办公、金融、总部经济、配送、产品展示、公共服务平台等功能的综合体。项目联系人:李女士18688773063。

Yantian Science and Technology Building, located at Shatoujiao Area of Yantian Comprehensive Bonded Zone and close to Yantian Port Station of the Eastward Extended Line of Shenzhen Metro Line 2, is invested and constructed by Shenzhen Shenshabao (Group) Co., Ltd. Yantian Science and Technology Building covers a total building area of around 72,300 m², including 21 on-ground floors covering a building area of around 56,400 m², and two underground floors covering a building area of around 15,900 m², and it has 442 underground parking spaces and 208 on-ground parking spaces. Also, it has the supporting facilities of grade-A office buildings. Yantian Science and Technology Building is a complex integrating the functions such as scientific and technological research and development, commercial office, finance, headquarters economy, distribution, product exhibition, and public service platform, etc. Contact person of the project: Ms. Li, 18688773063.

大百汇生命健康产业园位于盐田区深盐路2002号，总规划建设面积约30万平方米（目前建成投入使用面积约20万平方米），是盐田区重点打造的生命健康产业示范园区和产业转型升级示范项目。其中园区一期建筑面积近9万平方米，由大百汇中心写字楼、科研楼、生活楼组成。写字楼标准层面积3500至4000余平方米。科研楼层高4.2-4.9米，达到GMP实验室建设条件。生活楼配套建有商务酒店、公寓和员工餐厅等。园区二期建筑面积约11万平方米，其中：公寓3万余平方米；产业用房共3栋，约7万余平方米，标准层面积900-1700平方米，灵动组合设计，空间实用率高。项目配置停车位约2000个。项目联系人：范先生13824378208。



DBH Life Sciences & Health Industrial Park is located at No.2002, Shenyan Road of Yantian District. With a total construction area of 300,000 m² (200,000 m² of which is now ready for use), it is the major demonstration park of life sciences industry and industrial transformation and upgrading of Yantian District. Phase I of DBH Industrial Park provides over 90,000 m² of construction area, including Office Building, Science Research Building and Living Building. Each standard floor of Office Building provides 3,500-4,000 m². Science and Research Building meets GMP laboratory construction requirements with the storey height of 4.2-4.9 m. There will be business hotel, apartments and staff canteen within the Living Building. Phase II provides around 110,000 m² of construction area, including apartments covering over 30,000 m², over 70,000 m² of office/lab space including three independent buildings with the sizes of the standard floors ranging between 900-1,700 m², thus leading to high utility of space. The project is also equipped with about 2,000 parking spaces. Contact person of the project: Mr. Fan, 13824378208.

DBH LIFE SCIENCES & HEALTH INDUSTRIAL PARK 大百汇生命健康产业园



JADEITE ISLAND PLAZA

翡翠岛广场

翡翠岛广场位于盐田港区，由深圳市特区建设发展集团有限公司投资建设。项目总建筑面积约22.9万平方米，由40层塔楼及5层商业裙楼组成。项目定位为国际海洋现代服务中心，业态涵盖临港现代服务业中小总部基地、海洋文化旅游体验中心、星级酒店、特色教育培训、多元文化艺术交流中心等，建成后将成为盐田区的城市新名片。项目联系人：杜先生 15999951194。



Jadeite Island Plaza is located at Yantian Port, and is invested and constructed by Shenzhen Special Economic Zone Construction and Development Group Co., Ltd. Jadeite Island Plaza covers a total building area of around 229,000 m², including a 40-floor high building and five-floor commercial podium buildings. Aiming to be a modern international marine service center, the project covers the business forms like Port-Vicinity Modern Service Industry Small- and Medium-sized Head-quarter Bases, Maritime Cultural Tourism Experience Center, Star-level Hotel, Characteristic Education and Training, Diversified Cultural and Art Communication Center, etc., and it will be developed into a new urban name card of Yantian District. Contact person of the project: Mr. Du, 15999951194.





KWG TOPCHAIN PLAZA 合景同创广场



合景同创广场是由合景泰富集团和同创集团共同开发。项目紧邻深盐路，距离8号线盐田港站约700米。设计建成约20万平方米科技+海洋产业综合体。

首批推向市场的1号楼为甲级写字楼，共23层，总建筑面积4.2万平方米，双层挑高大堂层高10.5米，标准层高4米。电梯高中低三分区。设有屋顶平台，标准层均配备户外阳台。项目内配备5000平方米滨海风情商业广场，涵盖品牌餐饮、品牌旗舰店等商务配套。项目联系人:何女士 13713923161;谈女士 18696167622。



KWG Topchain Plaza is co-developed by KWG Group Holdings and Topchain Group. The project is close to Shenyuan Road, around 700 meters away from the Yantian Port station on Metro Line 8, designed to be a complex featuring scientific, technological and marine industries covering an area of 200,000 m².

No.1 Building, the first to be launched, is an A-class office building. With 23 floors, the building covers a total construction area of 42,000 m². The double-height lobby is 10.5 m high, while a standard floor is as high as 4 m. The elevators consist of high, medium and low zones. There is a roof terrace, standard floors equipped with outdoor balconies. The project includes a 5000-m² coastal style business square, covering brand catering, brand flagship stores and other business facilities. Contact persons of the project: Ms. He, 13713923161; Ms. Tan, 18696167622.

PACIFIC INDUSTRIAL ZONE RENEWAL PROJECT (HAIZHI CLOUD VALLEY)

太平洋工业区更新项目（海智云谷）

太平洋工业区更新项目（海智云谷）位于盐田区沙头角核心片区，由深圳市特区建设发展集团有限公司投资建设。项目总建筑面积约14.3万平方米，其中产品研发约5.7万平方米，配套商业约0.6万平方米，配套宿舍约1.8万平方米，住宅约1.2万平方米。项目将打造规划政务服务中心、高校合作中心、职业教育中心、人工智能中心等11个功能的综合体，定位为人工智能、文体教育与航空培训产业园，推动盐田产业转型升级、城市向前。项目联系人:张先生 13823231714。

Pacific Industrial Zone Renewal Project (Haizhi Cloud Valley), located at Shatoujiao Area of Yantian District, is invested and built by Shenzhen Special Economic Zone Development Group Co., Ltd., covering a total construction area of 143,000 m², including around 57,000 m² for product R&D, around 6,000 m² for commercial usage, around 18,000 m² for dorms, and around 12,000 m² for housing. The project aims to build a complex of 11 functions, including a government affairs service center, a universities' cooperation center, a vocational education center and an AI center among others. It is designed to be an industrial park featuring AI, cultural and sports education as well as aviation training, so as to promote industrial transformation and upgrading as well as the development of Yantian. Contact person of project: Mr. Zhang, 13823231714.





JINDOULING RENEWAL PROJECT 金斗岭更新项目

金斗岭更新项目由鹏广达集团投资开发，其位于深圳市重点开发区域-盐田河临港产业带核心地段，交通便利，靠近双地铁站口（8号/18号线）。规划容积面积约17万平方米，其中办公约3万平方米，商业配套约1.5万平方米，产业配套住宅约11万平方米，紧邻300多套盐田区人才保障房，周边生活配套设施齐全。项目将打造产业办公、配套住宅、服务业等多业态于一体的新型产业载体。项目联系人:雷女士13798598427。

Jindouling Renewal Project is invested and developed by Peng Guang Da Group and locates itself at the core zone of the Yantian River Port-Vicinity Industry Belt, a key development zone in Shenzhen. It is very convenient there as it is near a subway station (Metro Lines 8 & 18). With a planned area of around 170,000 m², it includes the office buildings of an area of around 30,000 m², supporting commercial facilities of an area of around 15,000 m² and supporting residence of an area of around 110,000 m². Close to the over 300 sets of social security housing for talent in Yantian District, it is equipped with all necessary amenities. The projects boasts a new industry carrier of office buildings, housing, and service industry among other forms of businesses. Contact person of project: Ms. Lei, 13798598427.

INTRODUCTION OF ZTE INTERNATIONAL R&D TRAINING CENTER

中兴国际研发培训中心



中兴国际研发培训中心位于盐田区盐梅路北侧。项目总建筑面积约9.46万平方米，培训中心分为研发区、培训区、生活服务区三个主要功能区，其中研发办公区5.12万平方米，含研2、研3两栋楼；培训区2.22万平方米；酒店及员工宿舍2.12万平方米，是提供科研办公、教育培训的生态、节能、高效的自然生态园区。

ZTE international R&D training center is located at the northern side of Yanmei Road of Yantian District. Covering an area of 94,600 m², the training center comprises of three functional zones featuring R&D, training and life services. Specifically, the R&D zone covers an area of 51,200 m², including No.2 and No. 3 R&D buildings; the training zone covers an area of 22,200 m²; the hotels and employee dorms cover an area of 21,200 m². As a result, it is an eco-friendly, energy-saving and efficient natural ecological park offering R&D facilities and educational training services.



BH-ICE ZONE

东部冰雪创新城



东部冰雪创新城位于盐田区盐田路3号，总建筑面积约10万平方米，包括食品供应链产业中心、冰雪主题的体验空间以及相关配套设施。创新城主要精准定位于食品供应链行业，致力为该产业打造产融中心、食品加工中心、食品配送中心、新零售餐饮体验中心及冰雪主题活动的体验中心。同时结合盐田区的文旅产业，打造“供应链+金融”的新业态。项目联系人：李先生 18603066001。



BH-ice Zone is located at No.3 Yantian Road of Yantian District, and it covers an area of around 100,000 m², including an industry center of food supply chain, an ice & snow experience space and other related supporting facilities. The Zone focuses on the food supply industry, striving to build industrial and financial center, a food processing center, a food distribution center, a new retail catering experience center and an ice & snow experience center for the industry. Meanwhile, combining the cultural and tourism industry, the District endeavors to build a new form of business featuring "supply chain + finance." Contact person of project: Mr. Li, 18603066001.



盐田现代产业服务中心地处沙头角片区中心，是盐田区的创新型产业用房。主体建筑共33层，总建筑面积约11.93万平方米，其中1至4层为裙楼，建筑面积约3.03万平方米，5层至33层为办公塔楼，建筑面积约5.17万平方米。符合条件的入驻企业可享受首年免收租金，入驻第2年和第3年享受基准租金30%的租金价格，第4年起享受基准租金50%的租金价格。租金价格的调整周期为5年。

Yantian Modern Industry Service Center is located in the center of Shatoujiao Area. It is an innovative industrial occupancy in the District. The principal building includes 33 floors in total, and covers a total building area of around 119,300 m². Wherein, the floors 1 to 4 are podium building, covering a building area of around 30,300 m²; floors 5 to 33 are office towers, covering a building area of around 51,700 m². The settled enterprises meeting relevant requirements will enjoy the exemption of rent in the first year, pay 30% of the benchmark rent in the second and third years after settlement, and pay 50% of the benchmark rent since the fourth year after settlement. The cycle for adjustment of rent price is five years.

SHENZHEN ELITE IMPORT COMMODITIES EXHIBITION AND TRADE CENTER (ELITE IMPORT CITY)

深圳精茂进口商品展示交易中心（精茂城）

深圳精茂进口商品展示交易中心（精茂城）位于盐田综合保税区沙头角片区，总面积约7.09万平方米，主楼共7层约6.29万平方米，首层规划为直营的进口商品直购中心CityWish（城市愿望）、进口名品区，二层以上分别为国际教育馆、精茂城欧洲名品展示交易中心、商务写字楼等。副楼共计4层共计8030平方米，功能为国际餐饮文化体验馆，目前入驻主力品牌有尚品居酒楼和胡桃里音乐餐吧。精茂城作为深圳唯一实现“红线内、围网外，前店后仓”保税展示交易的商业城，项目将打造成“保税展示+跨境电商+直购直销”的国际商贸O2O生态园。项目联系人：孙先生13502847939。



Shenzhen Elite Import Commodities Exhibition and Trade Center is located in the Shatoujiao Area of the Yantian Comprehensive Bonded Zone with a gross area of 70,900 m². The main building is with seven floors and has an area of 62,900 m². CityWish, the direct-sale center for imported goods and pavilion of imported boutique locates at the first floor. The 2nd floor and above are tailored to international pavilions, Jingmao City European Famous Products Exhibition and Trading Center, and Commercial Office Building, etc. The annex building has four floors with an area of 8,030 m², mainly used as experience pavilion for international catering culture. At present, the mainstream brands having settled herein include Shangpinju Restaurant and Hutaoli Music Bar. The Elite Import City, as the only bonded exhibition center in Shenzhen featuring “enjoying bonded zone policies, located outside the zone, shop in front and warehouse at behind,” will be built as an international O2O ecological park characterized by “bonded commodities display, cross border e-commerce and direct purchase and direct sale.” Contact person of project: Mr. Sun, 13502847939.

NATIONAL CREATIVE INDUSTRY BASE FOR JEWELRY CULTURE

国家珠宝文化创意产业基地

国家珠宝文化创意产业基地是深圳市首家国家级产学研相结合的专业特色珠宝文化创意产业基地，建筑面积约5万平方米。重点以高文化附加值产品的创意研发作为核心战略。公共服务平台将组建包括工业旅游项目、知识产权资本化交易平台、创意成果孵化平台、融资服务平台、云服务平台、评估检测与标准研发中心、中外合作培训机构、便捷仓储物流中心、国外先进珠宝加工设备 etc 十余个子项目。项目联系人：范先生15989436976。

The National Creative Industry Base for Jewelry Culture is the first national jewelry creative base that combines production, academic research and technology development of jewelry in Shenzhen. The total construction area reaches 50,000 m². It focuses on the creative research and development of high value-added cultural products. It owns several public service platforms covering multiple functions, including industrial tourism, the trading platform for intellectual property capitalization, incubation platform for creative products, financing service platform, cloud service platform, evaluation and standard formulation center, Sino-foreign cooperative training agencies, convenient storage logistic center as well as introduction of advanced jewelry processing equipment. Contact person of project: Mr. Fan, 15989436976.





YANTIAN INTERNATIONAL CREATIVE HARBOR & SZ-HK E-COMMERCE ADVERTISING INDUSTRY PARK

盐田国际创意港、深港国家电商广告产业园

盐田国际创意港一期建筑面积约3.5万平方米，作为“文化+电商”、“学院+园区”运营模式的复合型产业园，导入“文化+电商”双产业集群，以文化创意和电子商务产业企业为主体，形成双产业融合创新载体。项目联系人:郭先生 18565789434。

As a multipurpose industrial park that combines “culture + e-commerce” and “college + industrial park,” the Phase I of Yantian International Creative Harbor covers an construction area of 35,000 m², while introducing a “culture + e-commerce” dual-industry cluster. With culture creativity and e-commerce companies as the main body, it forms an innovation carrier accommodating dual industry. Contact person of project: Mr. Guo, 18565789434.

KINGMA MARINA SQUARE 金马创新产业园

金马创新产业园位于深圳市盐田综合保税区北片区，占地23847平方米，总建筑面积69384平方米，主要由一号楼四栋集仓储、展示及办公的综合楼，和二号楼超高层展览厅及高级普通仓储组成。项目以现代物流为依托，以盐田港物流集散市场需求为导向，以信息管理为支撑，创建集现代化仓储、商品交易、电子商务及办公于一体的现代化、多功能大型产业孵化基地。打造一流的商贸物流平台，提供一体化综合服务，为中小型企业提供一个大型产业孵化平台。项目联系人: 林先生 13530321122。

Covering an area of 23,847 m², Kingma Marina Square is located in the north of Yantian Comprehensive Bonded Zone, with a total construction area of 69,384 m², composed of the No.1 Building that comprises four buildings integrating storage, exhibition and office blocks, and No.2 building of an ultra-high exhibition hall as well as a high-end storage building. It is developed on the basis of modern logistics industry and oriented to meet the demand of logistics distribution in Yantian port. Supported by information management, it is built to be a modern, multi-functional and large-scale industrial base that aggregates modern warehousing, commodity transaction and e-commerce. It will develop itself into a top trade and logistics platform and an integrated industry platform which can provide comprehensive service to small- and medium-sized enterprises. Contact person of the project: Mr. Lin, 13530321122.



CHUNG YING STREET 中英街特色商业街

中英街位于深圳东部沙头角镇内，是深圳市独树一帜的“一国两制”历史文化景区和名优小商品特色商业街。深圳市沙头角商业外贸有限公司所属的第一商场二楼以上建筑面积为4003平方米，空间实用率高，可充分满足大型商超体及特色餐饮进驻的需求；碧海楼为独栋三层建筑，建筑面积为4150平方米，东邻海滨栈道，南近回归广场，西接中英街商业片区，地理位置优越，适合发展酒店、餐饮、美容等休闲行业。项目联系人：夏女士 0755-25550118。



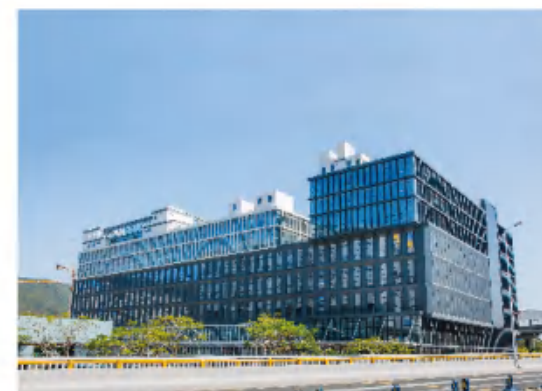
Chung Ying Street is located in the Shatoujiao Town in the east of Shenzhen. It is the “one country, two systems” historic and cultural site and special commercial street unique to Shenzhen. Shenzhen Sha Tou Jiao Commercial Foreign Trade Co., Ltd., occupies the second floor and above, covering an area of 4,003 m², with high utility of space, capable of meeting the needs of large-scale shopping malls and special catering facilities. Pik Hoi House is an independent three-storey building, covering an area of 4,150 m², with the seashore boardwalk at its eastern side, Golden Bauhinia Square at its southern side, Chung Ying Street Area at its western side. Given the favorable location, it helps develop hospitality, catering and beauty among other leisure industries. Contact person of the project: Ms. Xia, 0755-25550118.



HAIGE CLOUD CHAIN BUILDING 海格云链大楼

海格云链大楼位于盐田综合保税区，总建筑面积约8.4万平方米。是盐田综保区内首个集跨境供应链综合服务、保税展示交易、跨境电商保税仓库功能于一体的新型保税仓。展厅服务于进口保税展示业务，通过线下展示交易，结合线上供应链服务平台，共同打造海格完整的B2B供应链服务平台。项目联系人：李女士 13686843192。

Haige Cloud Chain Building is located in Yantian Comprehensive Bonded Zone, and covers a total building area of around 84000 m². It is the first new bonded warehouse that aggregates multiple functions such as providing comprehensive service for cross-border supply chain, bonded exhibition and trade, and cross-border E-commerce bonded warehouse. Exhibition hall is dedicated to the imported bonded business. Offline exhibition and trade are combined with online supply chain service platform to forge Hercules B2B supply chain service platform. Contact person of the project: Ms. Li, 13686843192.



ZHONGTONG-BAIFUXIN MODERN LOGISTICS PARK

中通百富新现代物流园

中通百富新现代物流园位于盐田综合保税区，总建筑面积约16.56万平方米。是世界级港口物流中心和全球进口商品综合物流商贸平台。项目采用国际建筑标准，拥有层高达8米的近20万平方米全盘道直入式立体物流仓。提供各种类型保税仓储及商品存储、商品展示、跨境电商、贸易供应链实施等全程服务。项目联系人：黄先生 13603060687。



Zhongtong-Baifuxin Modern Logistics Park is located in Yantian Comprehensive Bonded Zone and the total construction area is 165,600 m². It is world-class port logistics center and global imports logistics and trade platform. Built with international architectural standards, it has a tridimensional warehouse with a floor height of eight meters and an area of about 200,000 m² as well as a rotary path to entrance. It provides full process services such as bonded warehousing, commodity storage, commodity display, cross-border E-commerce, trade supply chain, etc. Contact person of the project: Mr. Huang, 13603060687.

YANTIAN PORT CENTURY LOGISTICS PARK

盐田港世纪物流园



盐田港世纪物流园位于盐田综合保税区，总建筑面积约6.74万平方米。项目采用国际建筑标准和人性化设计，拥有便捷的海、陆、空、铁联运网。主要业务功能包括：进出口货物存储、增值物流服务、国际采购、国际配送、国际中转、检测维修、商品展示等。项目联系人：殷先生 13509699393。

Yantian Port Century Logistics Park is located in Yantian Comprehensive Bonded Zone and the total floorage is 67,400 m². It adopts international architectural standard and user-friendly design, possessing convenient transportation network of sea, land, air and railway. The core service modules include imported and exported cargo storage, value-added logistic service, global procurement, global distribution, international transfer, inspection & maintenance, commodity display, etc. Contact person of the project: Mr. Yin, 13509699393.



YICT BUILDING

盐田国际大厦



盐田国际大厦位于盐田区进港三路，总建筑面积4.5万平方米，按五星级写字楼建造，租户独立大堂。紧邻深盐路，交通便捷。租户享受员工优惠价就餐。地铁开通后将提供地铁站穿梭巴士服务。该大厦主要用于盐田国际集装箱码头有限公司办公，现有约5000平米办公面积空置出租，楼层位于3层—10层。项目联系人：闫先生 13802258079。



YICT Building, located at the No.3 Jingang Road, Yantian District and covering a total construction area of 45,000 m², is designed to be 5-star office building with an independent lobby. As it is close to Shen-yan Road, the transportation is convenient. Renters are entitled to favorable meal prices benefitting their employees. Following the opening of the subway, shuttle buses will be provided. With Yantian International Container Terminals Ltd. having used a majority of the building, it now has around 5,000 m² for rent, on 3rd-10th floor. Contact person of the project: Mr. Yan, 13802258079.



配套政策

BUSINESS ENVIRONMENT AND
SUPPORTING POLICIES



BUSINESS ENVIRONMENT AND SUPPORTING POLICIES

营商环境及配套政策

盐田区按照“小政府，大社会”的思路，强力推进行政管理体制变革，机构编制始终保持全市最精简。深化政务服务机构改革，推行“前台综合受理、后台分类审批、统一窗口出件”新模式，政务服务水平不断提高。大力推进“互联网+政务服务”模式改革，优化营商环境，提供高效便捷全面的企业服务，在“深圳90”基础上，提高标准实行“盐田80”。网上办事大厅实现区级各单位行政审批事项100%网上全流程办理，全区各街道、社区网上办事站点实现全覆盖。

制定完善了一系列扶持企业发展的政策措施，实施区领导挂点服务企业制度，开展百人服务百企活动，形成健全的政府服务企业工作机制。产业发展资金、创业投资引导基金为辖区企业提供各类扶持资助，为盐田产业发展注入强劲动力。

为解决人才住房问题，2019年完成筹集人才住房和保障房3005套，2020年将持续建设筹集不少于3000套。



With concept of “Small Government and Big Society,” Yantian District government pushes forward the reform of public administration system. It keeps the most downsized government in Shenzhen while delivering efficient service. The entire process of administration application and approval is simplified, which greatly improves the administration service. The District has put forth effort to promote the reform of “Internet+ Administrative Services” model, improve the business environment, and offer efficient, convenient and all-round corporate services. Based on the “Shenzhen 90”, it strengthens the standards of implementing “Yantian 80.” All government-affiliated institutions are able to go through the whole administrative approval procedures via Internet. Online service can reach every subdistricts and communities in Yantian.

Yantian District has formulated wide range of policies on supporting the enterprise development and also formed sound mechanism for providing service to enterprises. For instance, the District allots the key enterprises among the district leaders in order to provide quick and efficient service. Meanwhile, it conducts a campaign of “100 People Serving 100 Enterprises,” which allows each enterprise to have a dedicated government official for better service. Yantian District offers various capital supports to the enterprises like setting up the industry development funds and venture capital funds for the start-up companies. All of them inject power into the industries and boost local enterprise development.

In order to offer housing for talent, 3,005 sets of social security housing for talent have been put in place in 2019, while 2020 will see no less than 3,000 sets.

《盐田区招商引资促进办法》



系列招商引资
及产业扶持政策
可扫码了解

一、落户奖励

- （一）对将总部迁入盐田区的大型领军企，可一次性申请最高 3000万元的落户奖励。
- （二）对上年度纳税总额不低于3000万元落户盐田区的优质企业，可一次申请300万元落户奖励
- （三）对区外在境内上市（指在沪深主板，中小板、创业板、科创板上市）将注册地、纳税登记地迁入盐田区的企业，可一次性申请500万元的落户资助。
- （四）对属于深圳市认定的产业链薄弱环节投资项目，符合盐田区产业导向并落户盐田区的，盐田区对项目所属企业给予市级奖励额50%的配套奖励。

二、研发办公和生产场地用房支持

- （一）在我区购置自用研发办公和生产场地用房的重点引进项目企业，可申请最高2000万元支持金额。
- （二）在我区租赁自用研发办公和生产场地用房的重点引进项目企业，可申请每年最高500万元支持奖励。
- （三）在我区购买或租赁自用研发办公和生产场地用房的重点引进项目企业，首次装修办公场地的费用，可一次性申请最高500万元的装修费用支持。

三、人才安居支持

重点引进项目人才纳入人才安居保障范围，可按有关规定申请人才住房。

四、重点产业载体业主和运营商的支持

- （一）多业主载体通过转让收购转为单一业主载体，或多业主载体委托第三方专业机构进行招商运营，可一次性申请最高200万元支持奖励；
- （二）业主和运营商对载体停车场、餐厅等配套设施实施更新改造投资，可申请最高200万元的支持。如使用房屋专项维修基金，可一次性申请最高50万元的支持；
- （三）联合区政府相关部门举办符合我区产业导向的宣传推介及招商活动的，根据举办地位于境外、市外及市内等三类情况，予以一次性最高50万元、30万元、20万元的招商推介专项支持。

五、重点产业载体招优引强支持

对重点产业载体所引进的企业上年度纳税总额超过1亿元的，对运营主体给予500万元的一次性奖励。从下一年度开始，重点产业载体纳税总额每同比增长5%，给予运营主体最高连续三年20万元奖励纳税增量奖励。

《盐田区支持总部企业发展实施办法》

一、总部企业认定标准

- （一）在本区注册设立且经营不满一年，注册资本不低于1亿元，其控股母公司总资产不低于20亿元，承诺在申请认定次年形成区级财政贡献不低于1000万元。
- （二）由原注册地新迁入且经营不满一年，注册资本不低于1亿元，上年度企业纳税总额不低于3000万元，承诺在申请认定次年形成区级财政贡献不低于1000万元。
- （三）在本区注册且在本区持续经营一年（含一年）以上，上年度形成区级财政贡献不低于1000万元。
- （四）在境内证券交易所和境外主要证券交易所上市的公司总部可直接认定为区总部企业。
- （五）工商及税务登记在区的市级总部企业可直接认定为区总部企业。
- （六）对我区重点产业发展具有填补空白和完善产业链作用或者核心技术处于国内外先进地位的企业，可申请认定为区总部企业。

二、总部企业认定奖励

对符合总部企业认定标准中（一）、（二）条的总部企业，在申请认定次年实现其承诺区级财政贡献的，可申请一次性最高6000万元的认定奖励。

三、总部企业增量奖励

符合条件的总部企业，从认定次年起连续三年给予资金扶持，每年可申请最高1000万元增量奖励。

四、研发办公和生产场地用房支持

总部企业5年内在区内按市场价格购买研发办公和生产场地的，可累计申请最高2000 万元支持奖励。总部企业在盐田区内按租用的研发办公和生产场地用房，连续三年给予每年最高500万元支持奖励。

五、配套支持

总部企业可享受区领导挂点服务、区重点企业便利直通车等服务；总部企业员工可按有关规定享受子女入学、医疗保健等优惠政策和便利措施。

健康盐田 智能蓝湾

Health Yantian, AI Blue Bay